



FiskalPRO T2

Operation manual

Contents

Contents.....	2
Contacts.....	3
Introduction	4
Attention of installation and operation	5
Packing list.....	7
Technical specifications.....	8
Structure description.....	9
Instruction	10
Common fault process.....	15
Announcement.....	17
FCC Statement.....	18

Contacts

Technical support

Mobile:

+421 2 2057 0276

E-mail:

servis@fiskalpro.sk

Information

Mobile:

+421 850 333 300

E-mail:

info@fiskalpro.sk

Introduction

Dear customer,
thank you for purchasing the FiskalPRO T2. This brief manual will help you to start the device and guide you through its basic setup in POS, payment terminal, eKasa printer mode. An online version of the manual is available at bitly.cx/UKpn7 or bitly.cx/ryGAk. Your dealer or service partner can help you get started.

Scan me



Attention of installation and operation

- Follow these instructions exactly when installing and connecting the terminal.
- This terminal works only with the supplied charger, which cannot be replaced by another charger as it may cause incorrect operation or even damage to the terminal.
- Do not use damaged cables and chargers. Injury may occur.
- The user must ensure that the device is connected to a 230V/50Hz mains power supply.
- Protect the device from water and other liquids as this will cause a short circuit and damage the terminal.
- Please do not insert foreign objects into the ports, this will irreversibly damage the terminal.
- Any tampering with the equipment without the express permission of the dealer is illegal and subsequent claims will be rejected.
- Use thermal paper with a roll width of 57mm and a maximum diameter of 40mm.
- Do not expose to shocks, avoid dropping the device.
- Do not use or place flammable sprays or paints in the vicinity of the equipment, there is a risk of fire.

Component	Hazardous and noxious substances or elements					
	Pb	Hg	Cd	Cr(VI)	PBB	PBDE
PCB components	X	O	O	O	O	O

Notes:

1. „O“ means that the content of toxic and hazardous substances in all homogeneous materials of the component is lower than the requirements of standard SJ/T11363-2006.
2. „X“ means that the content of toxic and hazardous substances in at least one homogeneous material exceeds the requirements of SJ/T11363-2006, but the components marked with 'X' in the table above are at the current industrial level of technology development and it is not possible to substitute those toxic and hazardous substances or elements in them

Environmental data:

All products that reach or exceed their useful life should be recycled according to the "Electronic and Information Product Management" document, they cannot be disposed of arbitrarily.

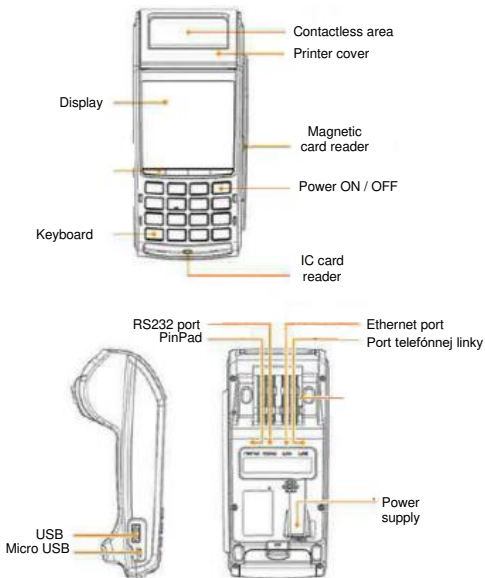
Packing list

No.	Item	Quantity
1.	FiskalPRO T2	1
2.	T2 Operation manual	1
3.	Power adapter	1

Technical specifications

Display:	touchscreen 2,8", color display 320 x 240
Connection:	LAN, RS232/PIN Pad, USB
Ports:	LAN, RS232, USB
Printer:	Rýchla thermal printer, roll width 57mm with 40mm diameter
Operating system:	Linux 4.4.x
Processor:	Cortex-A7 Quad-Core 1.4 GHz
Memory:	128MB RAM DDR, 256MB FLASH
Dimensions:	175 x 81 x 72 mm
Weight:	320 g

Structure description



Instruction

Power on / off

Power on: To switch on the terminal, press the red " ⏻ " button for 3-4 seconds until the backlight comes on.

Power off: Press the red button " ⏻ " , the screen will display "Shut down" , "Confirm" or "Cancel"; press "Confirm " and the terminal will shut down.

Magnetic card

Swipe card in magstripe card slot as demonstrated below in steady motion, and make sure the magstripe faces the device.

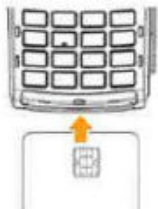
Note: Any damage to the magstripe or incorrect swiping may lead to transaction failures



Contact IC card

The IC card slot is on the right side of the main unit. To insert a card, hold the opposite side of the IC chip with chip facing up, insert the IC card into the slot. During the transaction process, the IC card should remain in the slot as shown in the pic below.

Note: If the contact point of the IC chip is damaged or oxidized, the transaction may fail.



Contactless IC card

While tapping a card, hold the IC card, get close to the top of the printer cover, hold for around 1 second till you hear a "beep" sound which means a successfully completed transaction. At this time, the card can be removed.



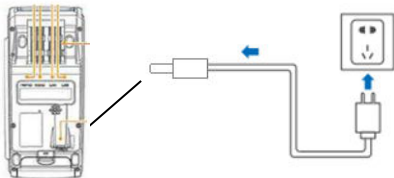
Paper removal

Hold the printing paper by hand, tear it down towards the direction as shown in the pic. While tearing the paper, please make sure the speed and power are even and swift.



Power charge

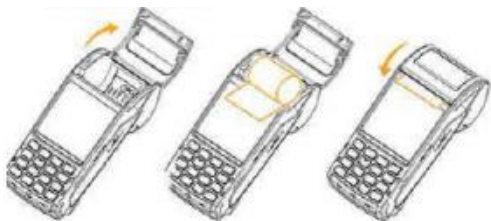
Connect the charging adapter to the mains and plug the other end of the adapter into the device.



Install paper roll

1. Open the paper cabinet cover in the direction shown below.
2. Open the paper-roll and insert it into paper holder in the direction shown above, leaving a small portion of paper below the paper cutter.
3. Close the paper holder cover in the direction shown below.

Note: Make sure the paper roll installed in the right direction or it will result in malfunction of the printer.

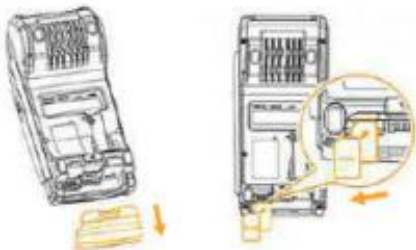


Install SIM card

1. Open the battery cover.
2. Place SIM card in the card holder (the chip of SIM card is oriented toward the inside of the machine), each holders is double layered – you can insert two cards.

Attention:

1. Install or remove SIM / SD, card, make sure the unit is turned off to avoid damage to the card.
2. SIM / SD card can not contain. Stickers or adhesive, which may affect the thickness of card and hinder, the smooth insertion or removal of cards.



Common fault process

If the following solutions do not solve an existing error, please contact customer service.

Category	Fault	Reason	Solution
ON / OFF Issue	Unable to power on terminal	1. Run out of battery 2. Battery installation incorrect	1. Connect with AC power supply. 2. Confirm the AC power supply is plugged in properly.
Communication fault	First installation cannot dial up, always display Dialing Please Wait	Without setting outside line number, or need delay after dial the outside line.	Add one to 4 commas at the front of outside line, one comma stands for waiting one second. Dial again one second after detect dial tone. If add 5 comma, then no need detect the dial tone, wait and continue dial after off hook.
	Display Telephone Line is not insert properly or telephone line being used	The telephone line is not insert properly, or the telephone number setting incorrect.	The telephone line is not insert properly, or the telephone number setting incorrect.
Printer	No display	The paper is upside down in the thermal printer.	Reset the print paper as the instruction.
	Print color is too light	Printer paper is not good quality.	Change good quality paper.

<p>Card Read failure</p>	<p>Prompt Card Read Error, Please swipe the card again</p>	<ol style="list-style-type: none">1. There is dirt in the magnetic card.2. Magnetic card is dirty or demagnetization.3. Swipe the card in a wrong way.	<ol style="list-style-type: none">1. A piece of moderate hard cardboard put card slot, and drag several times by light horizontal and vertical direction, and then wipe away the dirt from the head.
--------------------------	--	--	--

Announcement

Shenzhen Xinguodu Technology Co., Ltd reserves the right to modify this manual without prior notice and continuously improve the accuracy, adequacy and completeness of the information contained in this manual.

Shenzhen Xinguodu Technology Co., Ltd doesn't accept any legal responsibility for the adverse consequences caused by using this product not in accordance with this manual or using accessories which are not supplied by Shenzhen Xinguodu Technology Co., Ltd.

This manual is copyrighted by @ Shenzhen Xinguodu Technology Co., Ltd.

FCC Statement

This device has been tested and found to comply with the limits for a Class B digital device pursuant to Part 15 of the FCC Rules. These limits are designed to provide reasonable protection from harmful interference when installed in a residential installation. This equipment generates, uses, and can radiate radio frequency energy and, if not installed and used in accordance with the instructions, may cause harmful interference to radio communications. However, there is no guarantee that interference will not occur in a particular installation. If this equipment does cause harmful interference to radio or television reception, which can be detected by turning the equipment off and on, the user is advised to attempt to correct the interference by one or more of the following measures:

- Reorient or relocate the receiving antenna.
- Increase the distance between the device and the receiver.
- Plug the device into an outlet on a circuit other than the one to which the receiver is connected to.
- Ask your dealer or an experienced radio/TV technician.

This device complies with Part 15 of the FCC Rules.

Operation is subject to the following two conditions:

- (1) this equipment shall not cause harmful interference; and
- (2) this equipment must accept any interference received, including interference that may cause undesired operation.



Company address: 17B Jun Song Mansion, Terra Industrial & Trade Park, Chegongmiao, Futian District, Shenzhen

Manufacturer: Shenzhen Xinguodu Technology Co., Ltd

Factory address: C Building Dagang Industry Area, Changzhen District, Gongming Guangming, Shenzhen.

Telephone: 86 + 755 + 26067135

Website: <http://www.nexgoglobal.com>